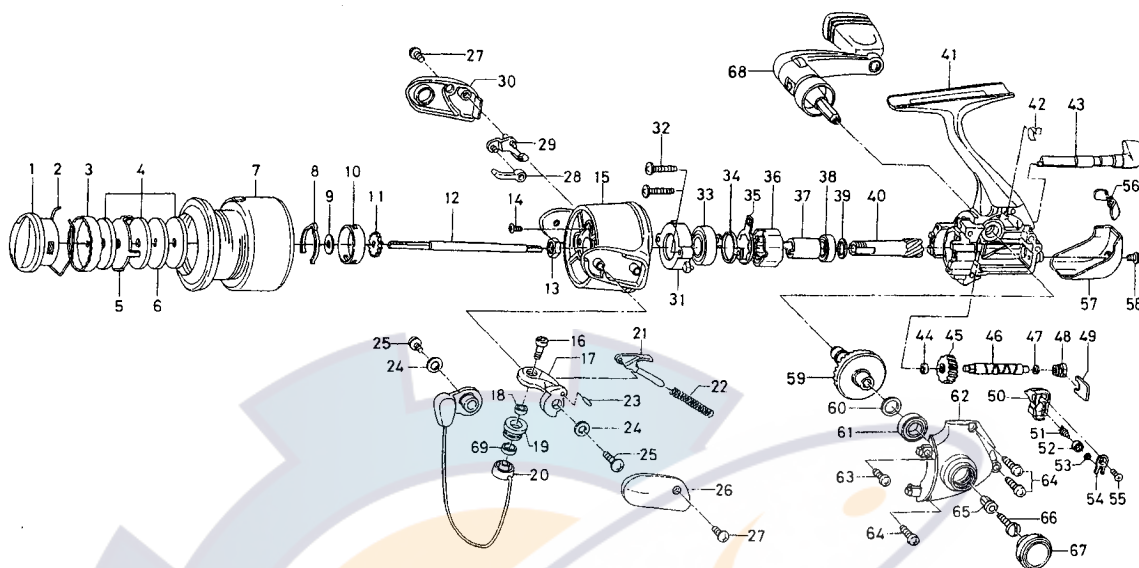


# EMBLEM-Z1500iA / 2000iA



| Key No. | Parts No. | Parts Name               |
|---------|-----------|--------------------------|
| 2-7     | F68-9801  | SPOOL                    |
| 1       | F63-6901  | DRAG KNOB                |
| 2       | F74-2501  | DRAG WASHER RET          |
| 3       | F69-0201  | DRAG KNOB CLICK PLT      |
| 4       | F69-2301  | DRAG WASHER              |
| 5       | F69-0101  | EARED WASHER             |
| 6       | F69-0001  | KEY WASHER               |
| 8       | F70-4901  | SPOOL CLICK LEAF SPRING  |
| 9       | E39-4001  | SPOOL WASHER             |
| 10      | E12-2303  | CLICK LEAF SPRING HOLDER |
| 11      | E36-5301  | CLICK GEAR               |
| 12      | F65-2701  | MAIN SHAFT               |
| 13      | 341-9203  | ROTOR NUT                |
| 14      | B55-7601  | ROTOR NUT LOCK SCREW     |
| 15      | F63-3704  | ROTOR                    |
| 16      | F62-5201  | LINE ROLLER SCREW        |
| 17      | F62-3503  | BAIL ARM                 |
| 18      | F62-5101  | BALL BEARING A           |
| 19      | F62-5001  | LINE ROLLER              |
| 20      | F68-9701  | BAIL                     |
| 21      | F69-1102  | BAIL SPRING SHAFT        |
| 22      | F74-2401  | BAIL SPRING              |
| 23      | F62-3701  | BAIL ARM PIN             |
| 24      | F63-1801  | BAIL HOLDER WASHER       |
| 25      | 351-6101  | BAIL ARM SCREW           |
| 26      | F63-1902  | BAIL SPRING COVER        |
| 27      | 352-2504  | BAIL SPRING COVER SCREW  |
| 28      | F62-4601  | BAIL TRIP PLT            |
| 29      | F72-7201  | BAIL TRIP LEVER          |
| 30      | F63-7002  | BAIL TRIP COVER          |
| 31      | F67-5501  | BEARING RET              |
| 32      | E24-7402  | BEARING RET SCREW        |
| 33      | F63-1201  | BALL BEARING B           |
| 34      | F67-5401  | BEARING RET B            |
| 35      | F62-2201  | ROLLER CLUTCH RET        |
| 36      | F62-2001  | ROLLER CLUTCH            |
| 37      | F73-2501  | SPACING SLEEVE           |
| 38      | 637-5702  | BALL BEARING C           |

| Key No. | Parts No. | Parts Name             |
|---------|-----------|------------------------|
| 39      | F63-3501  | PINION WASHER          |
| 40      | F65-2501  | PINION GEAR            |
| 41      | F65-1601  | BODY                   |
| 42      | F65-1901  | A/R CAM SPRING         |
| 43      | F65-1801  | A/R LEVER              |
| 44      | F65-2201  | WORM SHAFT BUSH        |
| 45      | F65-2101  | WORM SHAFT GEAR        |
| 46      | F65-2001  | WORM SHAFT             |
| 47      | 375-4101  | WORM SHAFT WASHER      |
| 48      | F65-2301  | WORM SHAFT COLLAR      |
| 49      | F65-2401  | WORM SHAFT RET         |
| 50      | F65-2601  | OSC SLIDER             |
| 51      | F62-2601  | OSC PAWL               |
| 52      | F62-2701  | OSC PAWL BUSH          |
| 53      | 375-0801  | OSC PAWL WASHER        |
| 54      | F62-2901  | OSC SLIDER COVER       |
| 55      | E15-0204  | OSC SLIDER COVER SCREW |
| 56      | F65-2901  | SHIELD PLT             |
| 57      | F65-3101  | REAR COVER             |
| 58      | E24-8103  | REAR COVER SCREW       |
| 59      | F65-2801  | DRIVE GEAR             |
| 60      | 375-8502  | DRIVE GEAR WASHER      |
| 61      | 637-5702  | BALL BEARING D         |
| 62      | F65-3001  | SIDE COVER             |
| 63      | E15-7502  | SIDE COVER SCREW A     |
| 64      | E13-0501  | SIDE COVER SCREW B     |
| 65      | F40-4801  | HANDLE COLLAR          |
| 66      | 363-8511  | HANDLE SCREW           |
| 67      | F65-3501  | HANDLE SCREW CAP       |
| 68      | F65-3302  | HANDLE                 |
| 69      | F70-1801  | LINE ROLLER COLLAR     |

### EM-Z2000iA

| Key No. | Parts No. | Parts Name |
|---------|-----------|------------|
| 2-7     | F69-4301  | SPOOL      |
| 20      | F69-7601  | BAIL       |